

ODYSSEY

Odyssey is a three-compartment trunking system with a completely curved front profile designed with tamper-resistant covers and fittings and flush accessories to enhance the finished appearance. Odyssey's curved profile is easy to clean and prohibits surface clutter.

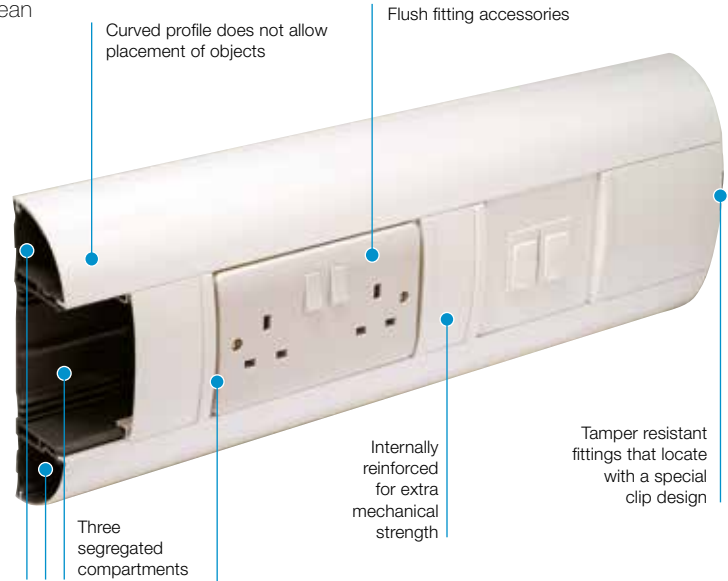


Product information

- 180 x 57mm
- 1 main compartment and 2 smaller outer compartments
- Can be subdivided by using EDF1 dividing fillet
- Suitable for dado application
- Available in antimicrobial Bio option (see page 85)
- Flush fitting accessories
- Tamper resistant covers and fittings
- Self extinguishing and non-flame propagating PVC-U
- Fire clips available to secure cables within trunking and prevent premature collapse in the event of a fire

Data information

- Compliant up to Cat 7a
- Standard bend radius 25mm
- Data fittings available for bend radius up to 65mm
- Steel screening divider available to BS EN 50714-2
- Adjustable data box 32-40mm
- Screened data boxes



Trunking profile



Trunking assembly (base and 3 covers)

code	size	pack
DD1WH	180 x 57mm	1 x 3m

Standard Colour
WH
WH: White

Part M

The Odyssey range includes unique coloured accessory boxes that meet the requirements of Part M (DDA) please refer to page 54.



REASSURINGLY RECYCLED
 OUR ODYSSEY TRUNKING BUILT UP PROFILE IS MANUFACTURED USING 63% RECYCLED MATERIAL.

Fittings (ABS)



Coupler

code	pack
DD1210WH	1



End cap

code	pack
DD1230WH	2



Internal bend

code	pack
DD1310WH	1



Internal bend adjustable

code	adjustable	pack
DD1330WH	85-95°	1



External bend

code	pack
DD1350WH	1



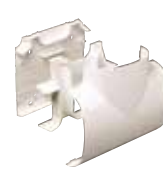
External bend adjustable

code	adjustable	pack
DD1370WH	85 - 95°	1



Flat angle up/down

code	pack
DD1410WH	1



Flat tee 3 part assembly - up/down

code	pack
DD1430WH	1

Fittings



MMT2 adaptor (ABS)

code	size	pack
DD1740WH	MMT2	1

Fabricated using PVC-U and ABS

***Box adaptors**

When installing adjustable boxes DD1540 and DD1550, a DD1590 adaptor should be used at either end of the box.

Where two or more adjustable boxes are being used in line, the spacer included is for use between boxes and a DD1590 adaptor is used at either end.

Boxes



RCD housing

code	pack
DD1580MWH	1

Up to 4 modules can be accommodated

Note: RCDs are not supplied by Marshall-Tufflex



1 gang accessory box (ABS)

code	depth	pack
DD1510WH	30mm	20



2 gang accessory box (ABS)

code	depth	pack
DD1520WH	30mm	10



***1 gang adjustable depth box (ABS)**

code	depth	pack
*DD1540WH	32 – 40mm	10



***2 gang adjustable depth box (ABS)**

code	depth	pack
*DD1550WH	32 – 40mm	10



Accessory box adaptor (ABS)

code	pack
DD1590WH	1 pair

Each pack contains 2 adaptors



1 gang power and data mounting frame

code	pack
DD1560WH	2



2 gang power and data mounting frame

code	pack
DD1570WH	2

Part M

For boxes that meet the requirements of Part M (DDA) please refer to page 54.

Firefly clips



NEW

Fire clip Odyssey centre compartment

code	pack
FC0C	50



NEW

Fire clip Odyssey outer compartment

code	pack
FC00	100



NEW

Don't forget, Firefly clips to comply with the current edition of BS 7671 Wiring Regulations

See page 141 for more information

Screening



Steel screening divider

code	pack
DD1730	1 x 1.5m

Note: optional steel screening divider to assist in compliance with BS EN 50174-2



Steel screening divider bonding clip

code	pack
ESF3	5



Bonding strap

code	pack
DD1711	5



1 gang screened accessory box

code	pack
DD1511WH	1

Screening



2 gang screened accessory box

code	pack
DD1521WH	1

Screening

Conductive spray (CS) is unique to Marshall-Tufflex and is applied in the factory to assist in screening from electromagnetic interference to data and communications cabling within trunking systems. The coating is applied to a range of data boxes, covers, clip-on components and fabricated fittings.

WARNING: A CS coating is not suitable for low voltage circuits. As per the current version of BS 7671 wiring regulations. For data/voice use only.

Odyssey Bio



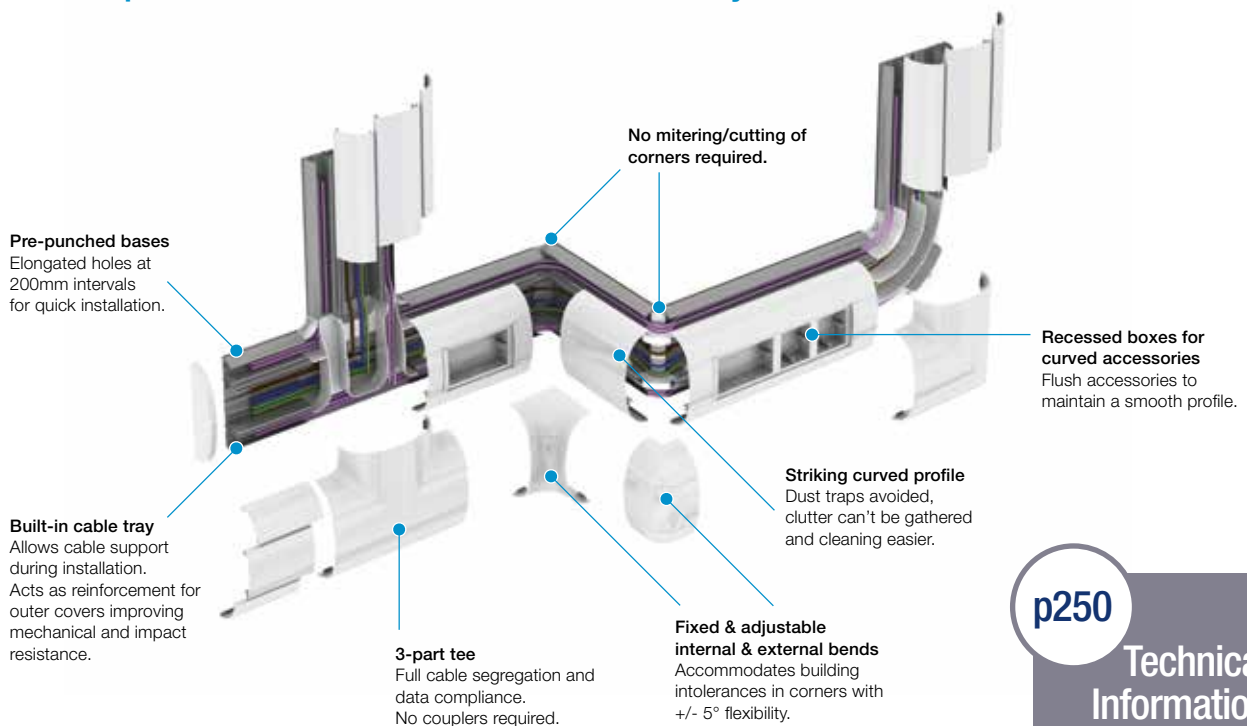
Odyssey is available as part of our standard range with Bio antimicrobial protection within the PVC-U material.

Odyssey Bio trunking component chart

Trunking assembly	Coupler	End cap	Internal bend	External bend	Flat angle (up or down)	Flat tee (up or down)	1 gang accessory box	2 gang accessory box	1 gang Bio power and data mounting frame	2 gang Bio power and data mounting frame
Odyssey trunking 180 x 57mm	DD1213WH Pack 1	DD1233WH Pack 2	DD1313WH Pack 1	DD1353WH Pack 1	DD1413WH Pack 1	DD1433WH Pack 1	DD1513WH Pack 20	DD1523WH Pack 10	DD1561WH Pack 2	DD1571WH Pack 2

Odyssey Trunking

Odyssey can enhance the look of a project as well as providing all of the practical features that ensure fast and easy installation.



PVC-U PERIMETER TRUNKING SYSTEMS